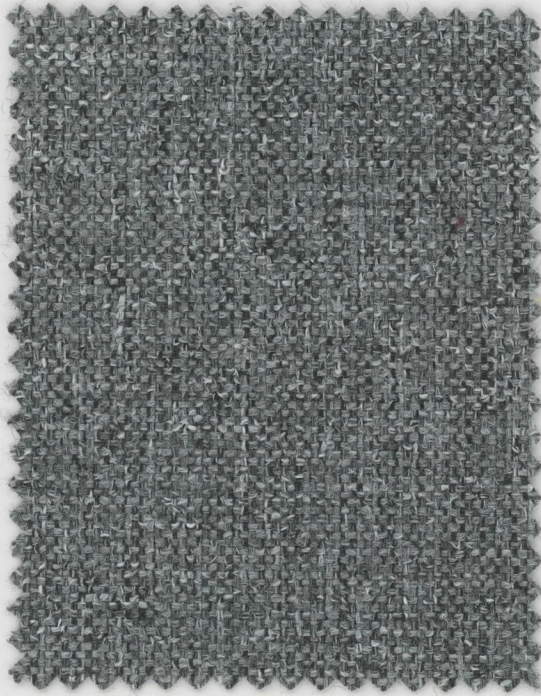
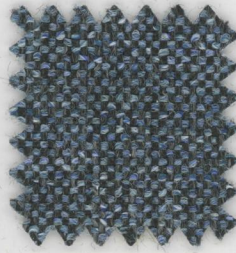


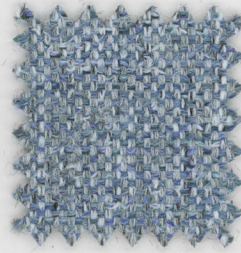
TWEED



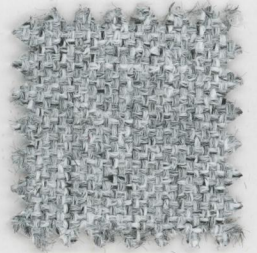
Grizzle **7002**



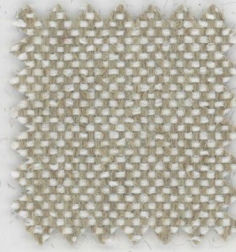
Dusk **7004**



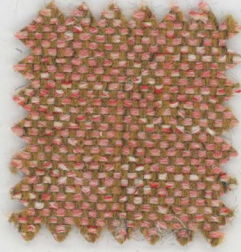
Seamist **7003**



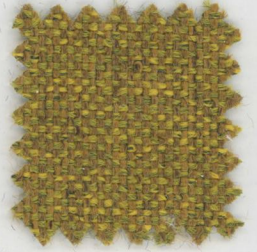
Platinum **7001**



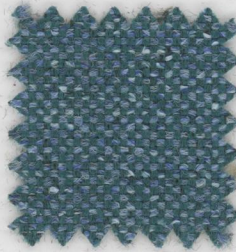
Sandbar **7007**



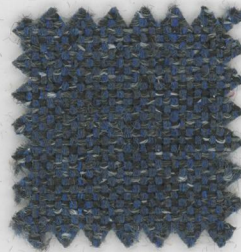
Reef **7009**



Maize **7008**

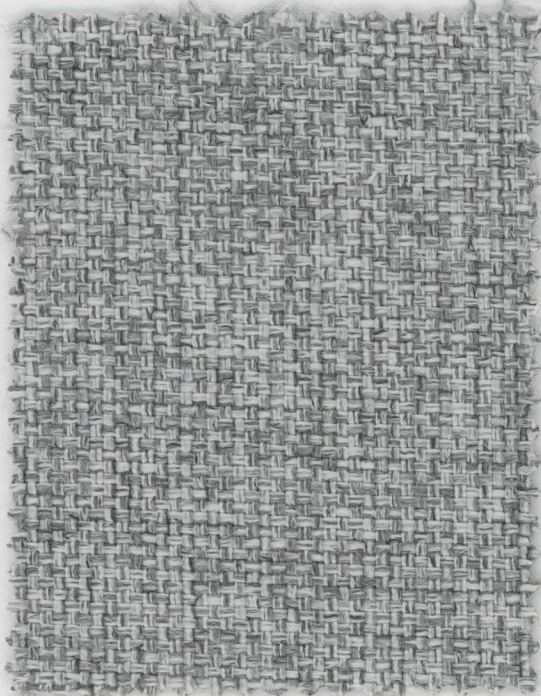


Oceanide **7006**

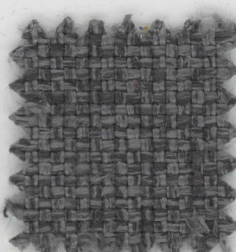


Eventide **7005**

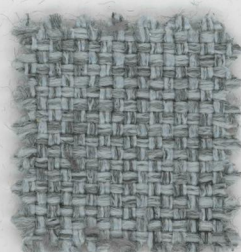
TOILE



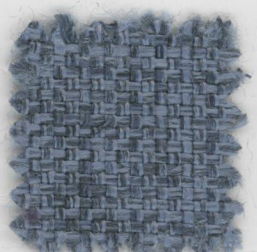
Silver **7010**



Ore **7011**



Silversea **7015**



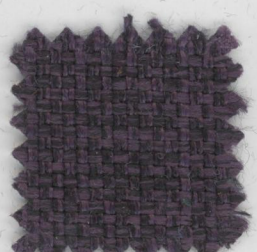
Brook **7013**



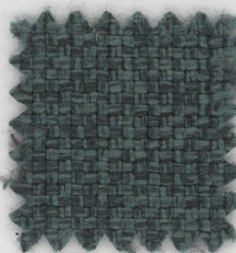
Starling **7014**



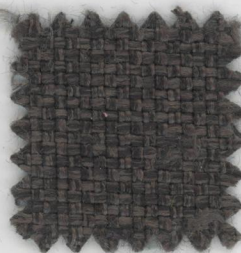
Cider **7018**



Currant **7017**

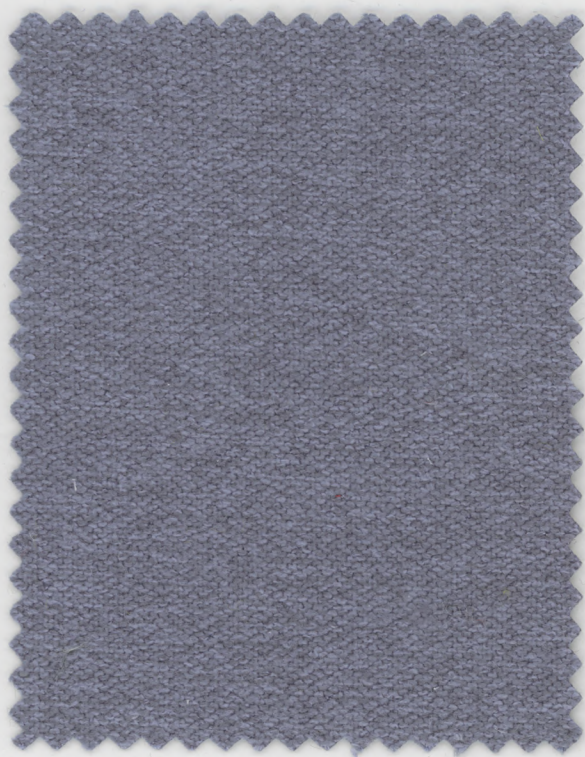


Lagoon Breeze **7016**

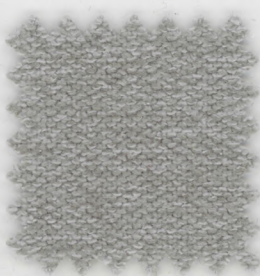


Raven **7012**

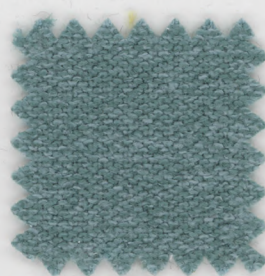
TUFT



Rivulet **7022**



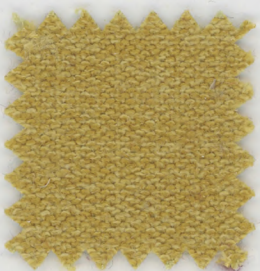
Tidewater **7024**



Coast **7025**



Glow **7027**



Topiary **7026**



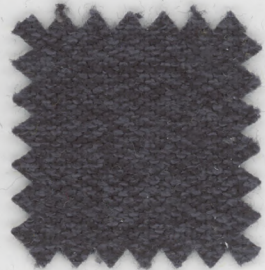
Cerise **7028**



Moon Stone **7020**



Tempest **7021**



Marina **7023**

Typical Physical Properties

TEST	UNITS	METHODS	RESULTS
Width	Inches (cm)	ASTM D-1776	54 (137)
Weight	Oz/yd2	ASTM D-3776	Toile: 14.5 oz/yd2 Tuft: 10 oz/yd2 Tweed: 9 oz/yd2
Seam Slippage MD	lbs	ASTM D-4034	PASS
Seam Slippage XD			PASS
Abrasion Resistance	Double Rubs	Wyzenbeek ASTM D-4157	100,000+ double rubs
Pilling	Scale	ASTM D-4970	PASS
Colorfastness 40 hours Xenon	Gray Scale for Color Change	AATCC 16.3-2014 Option 3	PASS
Wet Crocking	Gray Scale for Staining	AATCC-8	PASS
Dry Crocking			PASS
Resistance to 1:10 bleach	Scale	ACT 1-2020	PASS
Flammability	Scale	CAL TB 117-2013	PASS
Content			Toile: 94% Polyester, 4% Polyurethane, 2% Silicone Tuft: 89% Polyester, 9% Polyurethane, 2% Silicone Tweed: 88% Polyester, 10% Polyurethane, 2% Silicone

Environmental & Health Safety Benefits

- This product does not pose any exposure risks associated with the chemicals in Prop 65
- No added flame retardant chemicals
- PFC/PFOA free
- Healthier Hospitals compliant
- HPD Available

Disinfecting/Cleaning Information

Cleaning Code: WS

Bleach Cleanable: 10% Dilution

A combination of dry cleaning solvents and/or water-based cleaners may be used. These fabrics may be cleaned with upholstery shampoo, foam from a mild detergent, or a mild dry cleaning solvent.

Visit www.LDIinteriors.com for complete cleaning instructions and a list of cleaners and disinfectants that we have tested.



*ACT Registered Certification Marks

*Abrasion test results exceeding ACT Performance Guidelines are not an indicator of product lifespan